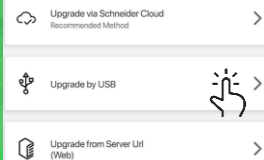


How to update EVlink Pro AC through eSetup with a thumb drive

MoP

Technical Support eMobility




Prerequisites:





Download the last Firmware package from [Evlink Pro AC webpage](#) on se.com

Before installing this new FW, it's really important to read the **release note**

You need the package *firmware update from eSetup (USB).zip* (screenshot can be a little bit different)

EVlink Pro AC Firmware 

Référence: GEX28844

EVlink Pro AC_charging_station_Release_Note_	 1,1 MB
firmware update from EVCE or OCPP	 69,3 MB
firmware update from eSetup (USB) .zip	 69,3 MB
	 1,6 KB

Télécharger ZIP

Proceed as described in the [Installation Guide NNZ19403 chapter 23](#) or [YouTube video](#).

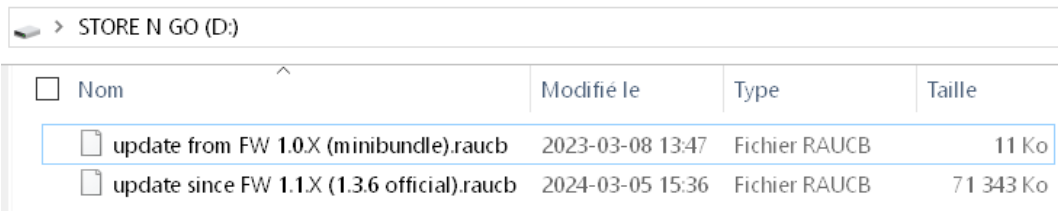
You can see details/examples on next pages.

1st Step : prepare the USB key

We recommend that USB stick is empty and formatted in FAT32 (no fast format)

On your laptop, unzip the file *firmware update from eSetup (USB).zip*

Copy and paste the 2 items (*.raucb*) at the **root** of key, you should obtain this :



The screenshot shows a Windows File Explorer window with the address bar set to 'STORE N GO (D:)'. The main area displays a table of files. The first file, 'update from FW 1.0X (minibundle).raucb', is selected and highlighted with a blue border. The second file, 'update since FW 1.1X (1.3.6 official).raucb', is listed below it. Both files are of type 'Fichier RAUCB'.

Nom	Modifié le	Type	Taille
update from FW 1.0X (minibundle).raucb	2023-03-08 13:47	Fichier RAUCB	11 Ko
update since FW 1.1X (1.3.6 official).raucb	2024-03-05 15:36	Fichier RAUCB	71 343 Ko

WARNING : if the Pro AC cannot read any file on the thumb drive. Please try another brand/model of USB stick.

The *minibundle* permits to upgrade to the latest version available on the stick with automatic retry in case of failure (known limitation with FW < 1.0.3).

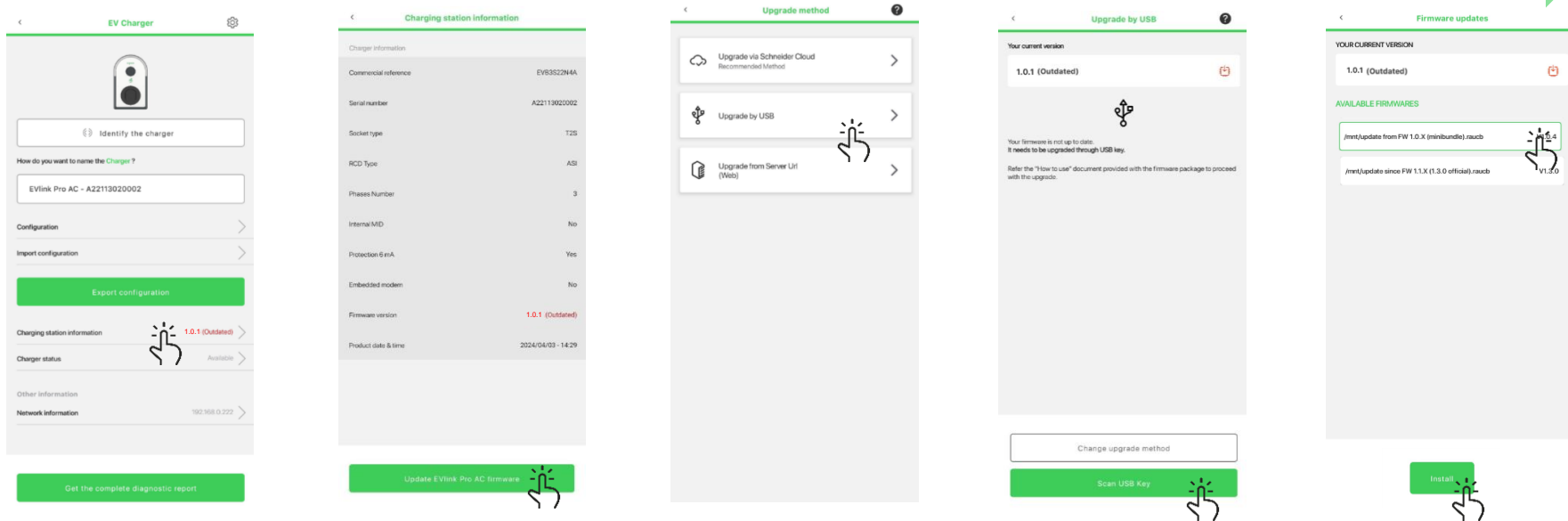
Please, select minibundle if it appears in FW selection screen in eSetup (scenario 1).

The *X.X.X official* is for upgrade from recent to latest version (scenario 2). NB: X.X.X is the version, 1.3.6 in this example.

2nd step scenario 1: FW upgrade from 1.0.X (select minibundle)

Connect the thumb drive on the USB port inside the Evlink Pro AC and follow eSetup FW upgrade procedure as described in the [Installation Guide NNZ19403 chapter 23](#)

During the upgrade you will have those screens (here it's an example from FW 1.0.1 to 1.3.0) : just select the mentioned (👉) areas

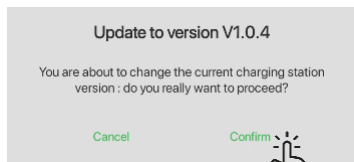


Select “Charging station information” to access to the “update” button

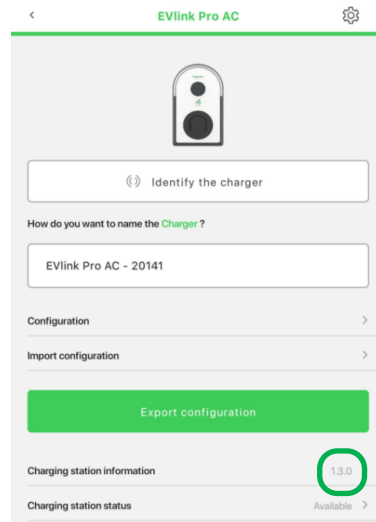
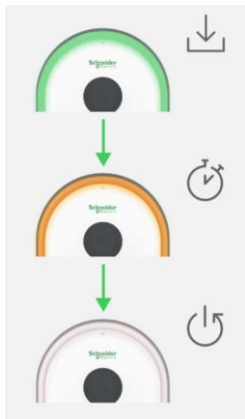
Because the current version in this example is 1.0.1, you need to use the minibundle to prevent risk of upgrade failure.

3rd step scenario 1: FW upgrade from 1.0.X (select minibundle)

During the upgrade you will have those screens (here it's an example from FW 1.0.1 to 1.3.0) : just select the mentioned (👉) areas



Just confirm the pop-up that appears



1.0.4 is the version of the mini bundle (at this step, target version of the FW can't be shown)

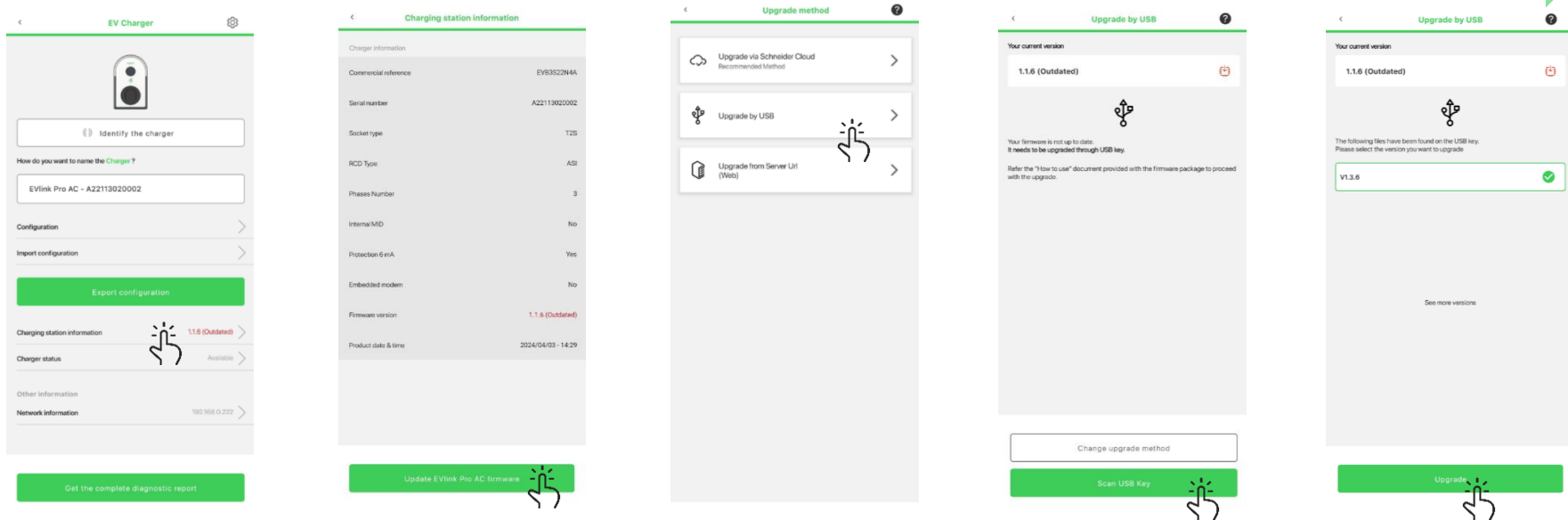
Do not switch OFF the Pro AC during the upgrade and wait the light become green (can take up to 10mn full process)

Connect eSetup and check the version (1.3.0 in this example)

2nd step scenario 2 : FW upgrade from 1.1.X (select official)

Connect the thumb drive on the USB port inside the Evlink Pro AC and follow eSetup FW upgrade procedure as described in the [Installation Guide NNZ19403 chapter 23](#)

During the upgrade you will have those messages (here it's an example from FW 1.1.6 to 1.3.6) : just select the mentioned (👉) areas

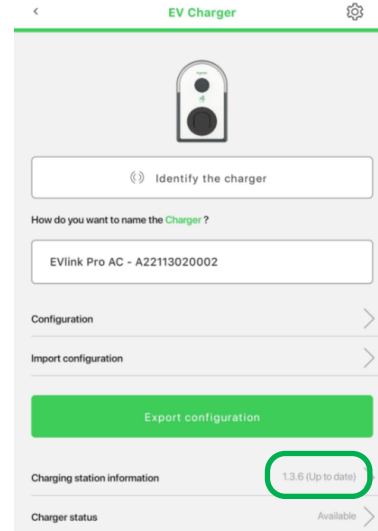
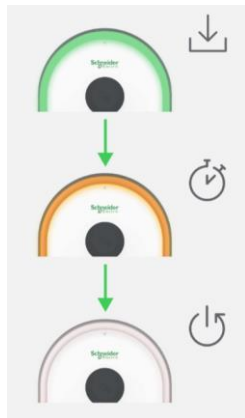
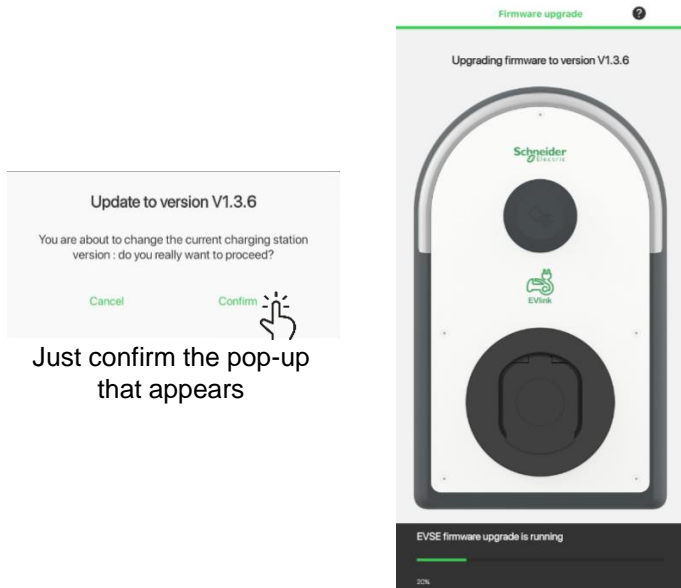


Select "Charging station information" to access to the "update" button

In this example 1.1.6 is the current version and 1.3.6 is the target version of the FW

3rd step scenario 2 : FW upgrade from 1.1.X (select official)

During the upgrade you will have those messages (here it's an example from FW 1.1.6 to 1.3.6) : just select the mentioned (👉) areas



In this example 1.3.6 is the target version of the FW

Do not switch OFF the Pro AC during the upgrade and wait the light become green (can take up to 10mn full process)

Connect eSetup and check the version (1.3.6 in this example)

Life Is On

